



QUALITY CLEANING SOLUTIONS

IDEAL FOR:

- Restaurants
- Cafes
- Motels & Hotels
- School



A-031b

**15L WET & DRY JANITOR
VACUUM CLEANER**

1000W



IMPORTANT

Always switch off the cleaner and remove the plug from the electricity power supply before cleaning your appliance, when not in use or attempting any maintenance task. The cleaner must only be connected to an AC power supply at the voltage shown on the rating label. This cleaner should only be used for its intended purpose as described in this instruction manual.

Never operate the vacuum cleaner without filters.

SAFETY PRECAUTIONS AND WARNING:

WHEN USING YOUR VACUUM CLEANER, BASIC PRECAUTIONS SHOULD ALWAYS BE OBSERVED, INCLUDING THE FOLLOWINGS;

1. This appliance is not intended for use by persons (including children) with reduced physical, sensory or mental capabilities or lack of experience and knowledge, unless they have been given supervision or instruction concerning use of the appliance by a person responsible for their safety.
2. Children should be supervised to ensure that they do not play with the appliance.
3. To prevent electrical shock, do not immerse the top cover of the appliance, power cord or power plug into water or other liquids.
4. To prevent electrical shock, do not use the vacuum cleaner outdoors.
5. Always check the power cord before use, the power cord and the plug should be in a good condition and must not be damaged. If the power supply cord is damaged or defective, it must be replaced by the manufacturer, its service agent or similarly qualified persons in order to avoid a hazard.
6. Do not unplug by pulling on the power cord. To unplug, grasp the plug not the power cord. Use only Australian and New Zealand electrical safety approved extension cords.
7. Do not pull or carry the appliance by the power cable, use the power cable as a handle or pull the power cable around shaft edges or corners. Avoid running the appliance over the power cable.
8. Ensure the appliance is switched off before unplugging.
9. Do not handle or operate the appliance with wet hands and follow electrical safety precautions at all times.
10. Extreme caution should be exercised when using the appliance on stairs.
11. Do not attempt to change the attachments while the appliance is plugged in to Mains power supply. Switch off and remove plug from Mains power supply. Use only manufacturer's recommended accessories.
12. Do not operate the vacuum cleaner too close to the heaters, radiators and other hot surfaces.
13. Do not use the appliance to pick up flammable items or combustible liquids (i.e. gasoline, hot ashes cigarettes, matches, explosive materials or anything burning) or use in areas where such substances and items may be present.
14. Do not use the appliance to pick up toxic materials (i.e. chlorine bleach, ammonia).
15. Ensure the appliance is disconnected from the Mains power supply before connecting the hose to the unit.
16. Before vacuuming, remove any large or shaft objects from the floor or cleaning surface in order to prevent damage to the filter.

17. If the air inlet, floor head or the telescopic tube is blocked, switch off the cleaner straight away and remove from the Mains power. First clear the blocked object before attempting to start the cleaner vacuum again.
18. Do not leave the appliance unattended when it is connected to a Mains power supply.
19. Before carry out any maintenance service or cleaning the filters, always switch off the vacuum cleaner and disconnect the plug from power supply
20. Keep ends of the hose, telescopic tube and other openings away from your face and body.
21. Do not use the vacuum cleaner if it is damaged or breaks down. Check the electrical regularly for defects. If connection cables, electrical hoses, electrical contacts and electric tubes are damaged, have them replace immediately.
22. Never clean any of the electrical parts, especially the electrical connections with water or liquid cleaners.
23. Never attempt to make any modifications electrically to the vacuum cleaner.
24. Always store the appliance indoors in a cool and dry place.
25. For indoors and domestic use only
26. Damage caused by improper use or by not observing the instructions in this manual will void warranty.

BEFORE YOU BEGIN



1. **Do not** operate the vacuum cleaner too close to heaters, radiators, and other hot surfaces.



2. Before inserting the plug into the wall, make sure your hand is dry.



3. Before turning on the vacuum cleaner, remove any large or sharp objects from the floor or cleaning surface in order to prevent damage to the filter.



4. When you want to pull the plug from the wall, **do not** use the power cable, gently pull the plug from the power socket.
5. If the hose inlet or telescopic chrome tube are blocked, you should switch off the cleaner straight away and remove from mains power. Clear the blockage before attempting to start the vacuum cleaner again.

This machine is equipped with a cord and plug. In the event that either of these parts get damaged, it must be repaired by a qualified technician.



KNOW YOUR PRODUCT

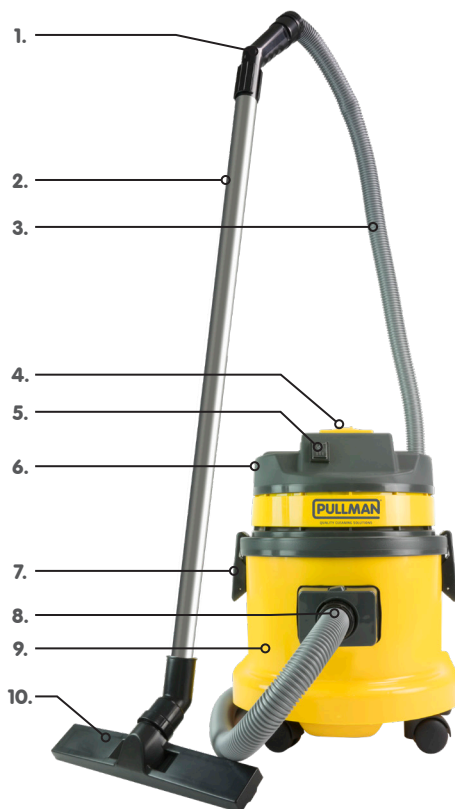
1. Handle
2. 2 Piece Metal Tube
3. Hose
4. Lid Handle
5. On/Off Switch
6. Lid
7. Latches
8. Hose Inlet
9. Tank
10. Wet Pick Up Floor Tool
11. Combination Floor Tool
12. Dusting Brush
13. Crevice Tool
14. Upholstery Nozzle

Technical Information

Model: A-031b
220-240V~ 50Hz
1000W



IPX4



ASSEMBLY (WITH HOSE)

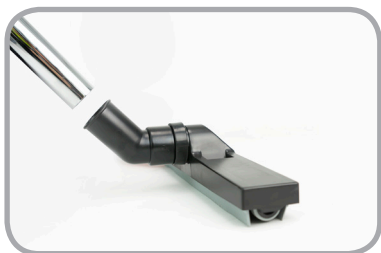
Part 1



1. Connect the 2-piece metal tube together.



2. Connect the handle on the hose to the tube.



3. Connect the tube to the desired cleaning accessory.



4. Connect the hose to the Pullman A-031b.

ACCESSORIES



Combination Floor Tool

The Combination Floor Tool is ideal for vacuuming hard floors and carpets.



Wet Pick Up Floor Tool

The wet pick-up tool is ideal for wet applications.



Fitting dusting brush and crevice tool

To fit the accessories to the 2 piece metal tube, gently insert the tube into the top of the dusting brush or crevice tool.

Crevice Tool

Dusting Brush

Upholstery Nozzle

Dusting Brush – ideal for cleaning furniture, curtains and upholstery

Crevice Tool – ideal for cleaning in tight spaces

Upholstery Nozzle – For vacuuming furniture and upholstery.

OPERATION

IMPORTANT: DISCONNECT THE CLEANER BEFORE CHANGING ACCESSORIES OR TO EMPTY THE CLEANER.

Dry Vacuum Cleaning



1. Release the latches to remove the canister lid.



2. Ensure the cloth filter bag is always installed before dry use.



3. Turn the switch of the vacuum cleaner to position "I".
4. Empty the dust tank or dust bag when it's full or after each use.
5. The cloth filter also needs to be cleaned accordingly.

OPERATION

Wet Vacuum Cleaning



1. Ensure the cloth filter is removed before the cleaner is used.



2. Turn the switch of the vacuum cleaner to position "I".

IMPORTANT: Empty the tank after each use.

MAINTENANCE

ATTENTION: DISCONNECT FROM MAINS POWER SUPPLY BEFORE DOING ANY MAINTENANCE WORK. IF PROPER CARE IS TAKEN TO MAINTAIN YOUR CLEANER, MOTOR MAINTENANCE IS UNNECESSARY. HOWEVER WE RECOMMEND THAT YOUR CLEANER IS SERVICED ONCE A YEAR.



1. Release the latches to remove the canister lid.
2. Remove the cloth filter.
3. The cloth filter bag can be washed under luke warm water.
4. Dry by airing for at least 24 hours.

Recommend to change the filter every 6 months to maintain the good air flow.



SPECIFICATIONS

Watts: 1000W

Capacity: 15L

Power Cable Length: 7m

Net Weight: 8.5Kg

TROUBLESHOOTING

TROUBLE	POSSIBLE CAUSE	REMEDY
Suction weakens or cleaner runs hot	Clogged filter	Brush dirt from filter. If condition continues, change filter.
	Air leak	Check all fittings for tight fit (floor tool, hoses, etc.). Check that tank cover is sealed properly.
	Obstruction in hose or floor tool	Check floor tool, hose, etc. for obstructions, and remove if present.

CUSTOMER CARE

For customer service or product enquiries please contact 1800 815 270 (AU) or 0800 282 288 (NZ)

PRODUCT NUMBER	PRODUCT DESCRIPTION
33500314	Small Castor Wheels
33200523	On/Off Switch
31110013	Combination Floor Tool
31110127	Hard Floor Squeegee Tool
31220268	Hose Assembly
31300393	Chrome Tube
31130062	Dusting Brush
31120071	Crevice Tool
33701473	Float Cage
33400148	Cloth Filter
31140059	Upholstery Tool
33701474	Latch

Conditions of warranty



Your Pullman cleaner has a one year parts and labour warranty against product defects and failures when the product is used in accordance with the terms and conditions of this warranty statement.

The cleaner must be operated in accordance with these instructions. This cleaner is not designed for the collection of vitreous building material including particle board, construction products and similar products such as wood/fibres, cement, fillers, fibre glass etc or excessive or frequent sand. The infrequent pick-up of these materials in these circumstances may be harmful to your cleaner and may void the manufacturer's warranty.

Accessories and consumables including dust bags and filters, unless defective in manufacture, are not subject to this warranty. In order to prolong the life of accessories and consumables, regular care and maintenance is recommended.

When properly used and cared for, your cleaner will render excellent service; refer to the instruction manual for further details, as misuse or failure to follow the instructions makes this warranty void. In the event of service or advice being needed, please contact Electrical Home-Aids Pty Ltd, ABN 62 007 539 577, Ground Level, Building 3 Brandon Business Park, 530 Springvale Rd, Glen Waverley, VIC 3150. Customer Care: 1800 815 270.

The decision to repair or replace the cleaner is at the sole discretion of Electrical Home-Aids Pty Ltd. If International Cleaning Solutions Pty Ltd decide

to repair or replace the cleaner, it will do so at its own cost.

Electrical Home-Aids Pty Ltd is unable to accept responsibility under this warranty for any repair work not carried out by an authorised Electrical Home-Aids Service Agent or from the use of non-genuine parts. If any part is no longer available or manufactured, International Cleaning Solutions will replace it with a genuine functional replacement part. This warranty does not apply to the cost of replacing any parts of the product due to normal wear and tear, alterations, improper installation, physical abuse, misuse or accidental damage. Any transportation costs involved in the repair of defective parts shall be borne by the claimant.

If proof of purchase cannot be provided at the time of a warranty claim or service, any work carried out on the cleaner is chargeable. The repair or replacement of the cleaner under this warranty does not extend the original period of warranty.

The benefits conferred by this warranty are in addition to all other rights and remedies in respect of the product as outlined under the Competition and Consumer Act and other State and Territory laws.

"Our goods come with guarantees that cannot be excluded in the Australian Consumer Law. You are entitled to a replacement or refund for a major failure and for compensation for any other reasonably foreseeable loss or damage. You are also entitled to have the goods repaired or replaced if the goods fail to be of acceptable quality and the failure does not amount to a major failure."



Electrical Home-Aids Pty. Ltd.

ABN 62 007 539 577

Ground Level, Building 3, Brandon Business Park
530 Springvale Road, Glen Waverley, Victoria 3150

Pullman is a registered trademark.

Contact Electrical Home-Aids Pty. Ltd. for your nearest authorised service centre on 1800 815 270 (AU) or 0800 282 288 (NZ).

customerservice@godfreys.com.au